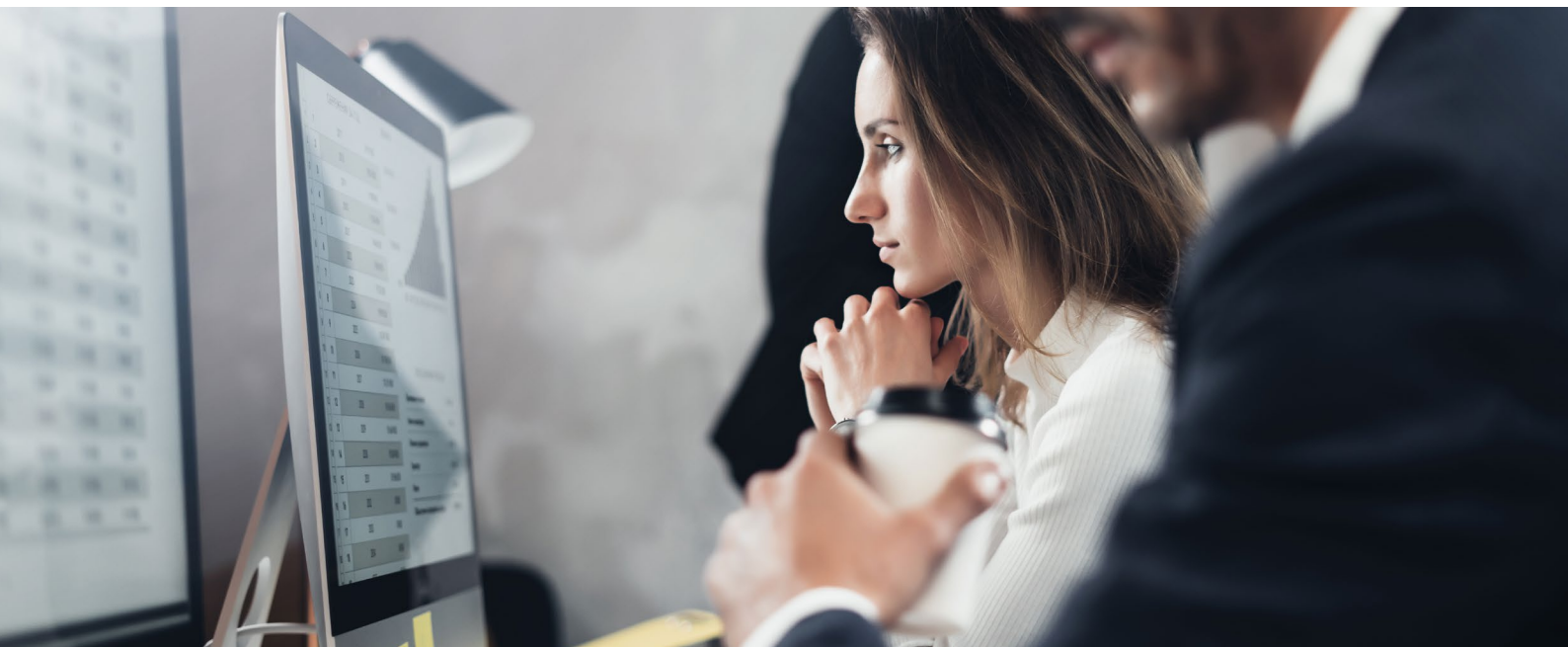


# OpenText Intelligent Capture

Reduce costs and accelerate business processes  
with automated intelligent capture



**Transform high volumes of documents** into actionable data for critical business processes and applications



**Reduce high labor costs** and improve the accuracy of information associated with document processes



**Leverage highly-scalable and flexible architecture** to support any size capture environment

**Intelligent enterprise capture solutions are invaluable for organizations seeking to streamline document-driven business processes. OpenText™ Intelligent Capture dramatically reduces manual processing costs, eliminates processing errors and decreases risk of non-compliance for manually-intensive processes, such as property and casualty claims, mortgage lending, accounts payable, back-file conversion and customer onboarding. By transforming paper and electronic documents into actionable data, organizations dramatically reduce processing errors and ensure regulatory compliance.**

Not all capture solutions are created equal. Many systems require intensive manual document preparation before scanning and extensive keying from image. Some do not support enterprise-grade requirements, such as high-volume batch capture or branch or regional office capture, while others address specific capture requirements, such as Accounts Payable, but not the entire organization. Others are not seamlessly integrated with business process management and content management solutions, delivering capture components without a complete solution.

Intelligent Capture meets enterprise requirements and provides an immediate, proven return on investment. More than 80 percent of Intelligent Capture customers experience ROI within 12 months, with 92 percent achieving positive ROI within 18 months.

## Solutions

### OpenText™ Intelligent Capture Web Client

- Provides browser-based web client access to document scanning and capture platform with realtime advanced recognition and data extraction capabilities
- Deploys and maintains web-based clients for scan and indexing documents at branch and regional offices
- Eliminates shipping and handling delays of business-critical documents between offices

### Intelligent Capture Advanced Recognition

- Recognizes all types of documents, including structured forms, semi-structured and unstructured documents, replacing expensive document handling and processing steps
- Reduces manual data entry and errors through intelligent data capture/OCR

### OpenText™ Intelligent Capture

- Provides base platform for all enterprise document capture needs, from high volume batch to branch and regional office capture
- Allows users to build simple and complex capture processes, without any coding, using drag and drop tools, point-and-click configuration and process customization through scripting to easily set up advanced "CaptureFlows"

### OpenText™ Intelligent Real-Time Capture

- Delivers discrete capture services that bring the full power of Intelligent Capture to mobile and line-of-business applications
- Offers ultra-high availability, highly-scalable and realtime response

### Intelligent Mobile Capture

- Offers an easier and faster way to capture-enable and deploy mobile applications
- Converts any camera-equipped mobile device into a powerful tool to capture information at the point of contact
- Delivers exceptional image enhancement and correction capabilities directly on the mobile device

### Intelligent Capture Invoice

- Provides faster invoice processing and improved data accuracy
- Reduces invoice data entry tasks and automates data verification
- Is a key part of the OpenText end-to-end accounts payable application

This is possible because Intelligent Capture quickly and efficiently automates manual processes and extends these capabilities to multiple lines of business applications.

Intelligent Capture customers and partners benefit from:

- Automated sorting and keying activities.
- Simplified document searchability.
- Reduced physical storage requirements.
- Better data quality.
- Improved regulatory compliance.
- Enhanced security.

As automated document and data capture has become a competitive differentiator, organizations are seeking ways to consolidate their IT environments and invest strategically in one intelligent capture solution. OpenText is uniquely positioned to provide a highly-scalable, secure software platform that successfully integrates with all types of business workflows, Line-of-Business applications and content management solutions.

## Leading the charge with omnichannel capture

Customer expectations have dramatically changed. Organizations require capture systems that can interact immediately with enterprise systems. This expectation applies not only to the capture and conversion of physical content, but also digitally-born content created in office applications, web applications and social media. Capturing information at the starting point of a process more quickly brings the content under secure organizational control and helps drive business opportunity.

Intelligent Capture interfaces with hundreds of scanners, leveraging OpenText's Image and Scanner Interface Specification technology and works with multi-function peripheral devices, mobile devices and network scanners for distributed capture environments. Documents are also captured from emails, network folders and other sources, providing organizations with many document input options.

## Proven intelligent capture automation solution

Intelligent Capture enables organizations to transform high volumes of documents into actionable data for use in vital processes and applications. By combining intelligent capture with process management, organizations dramatically reduce costs, errors and risks by ensuring that accurate information is available when and where it is needed. OpenText™ Intelligent Capture Advanced Recognition provides the following capabilities:

**Classify:** Uses both traditional document identification techniques, such as barcodes, page separators and patch codes, as well as advanced document identification technology. The intelligent classification technology employs a variety of methods to identify document types for faster operation and better accuracy than competing technologies.

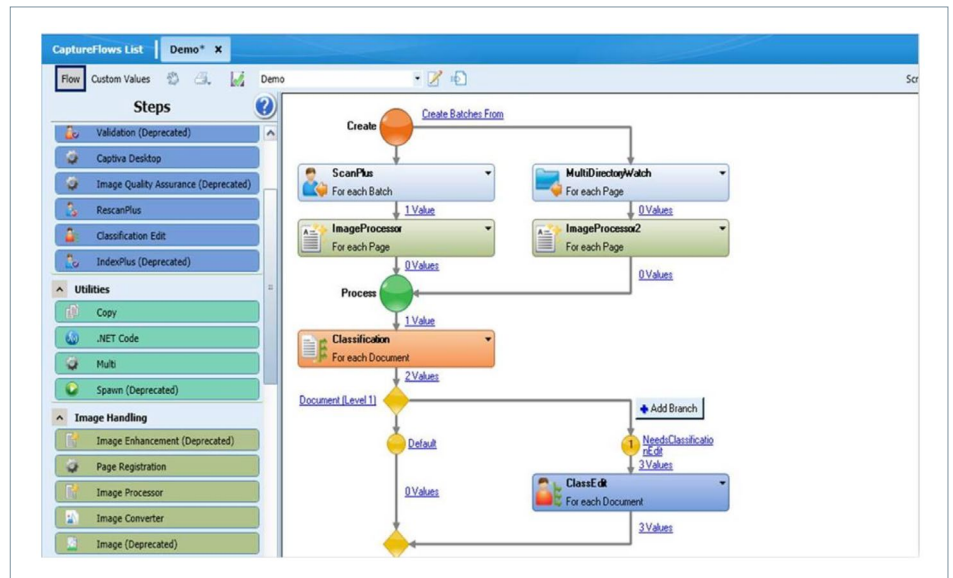
**Extract:** Leverages multiple recognition technologies, including OCR, ICR, OMR and barcode recognition, to automatically extract data from documents. Intelligent Capture provides key-from-image indexing support, zonal OCR and OCR rubber banding for quick document data extraction and indexing. With Intelligent Capture Advanced Recognition, extraction can be extended to include free-form data extraction from unstructured documents.

**Validate:** Provides automated validation capabilities, enabling most documents and data to pass through the capture process with no manual intervention. For exceptions in which the confidence thresholds automatically send documents and data to users for manual correction, Intelligent Capture provides the most intuitive user experience and ergonomic user interfaces for validating incoming documents and data extraction/OCR results.

## Highly-scalable and flexible architecture

Developed as a highly-scalable and flexible solution, Intelligent Capture leverages a modular architecture. The platform can process a few thousand images per day or several million. For large volumes, the solution scales for processing across multiple servers in a centralized environment or spread across many locations.

With a unique parallel processing technology, Intelligent Capture allows multiple clients to work on the same batch at the same time. Documents are virtually disassembled to allow processing tasks to be delegated simultaneously to specific workstations before being routed back to the server for re-assembly and completion. Intelligent Capture provides an easy to use configuration tool to set up these advanced "CaptureFlows," mapping 1:1 with business rules and integrating directly with multiple line of business applications.



OpenText Intelligent Capture includes the capture flow designer, which allows organizations to easily configure highly advanced "CaptureFlows" to automate manual processes and support multiple line of business applications.

## An integral part of OpenText case and content management solutions

Intelligent Capture solutions are part of a complete end-to-end solution for document lifecycle management, providing AI-augmented capture capabilities and supporting processes from paper records to transactional documents. OpenText case management and enterprise content management solutions provide a framework and a variety of applications that enable the deployment of a wide range of business solutions—all from one vendor.

[Learn more](#)

## Managed services options are available

OpenText also provides Managed Services OnDemand (MSOD), an “instant-on,” pre-configured, cloud-based, single tenant solution that helps organizations move out of their data center, while retaining control over the infrastructure and configurations of their capture platform.

## Leading companies count on Intelligent Capture solutions

More than 5,000 companies and government agencies use Intelligent Capture solutions to reduce costs, improve information accuracy and accelerate business processes, including 18 of the top 25 companies in the Fortune 500. Each day, organizations in the Insurance, Financial Services, Public Sector and Healthcare industries process millions of forms and documents using Intelligent Capture solutions.

## OpenText Intelligent Capture including Realtime

